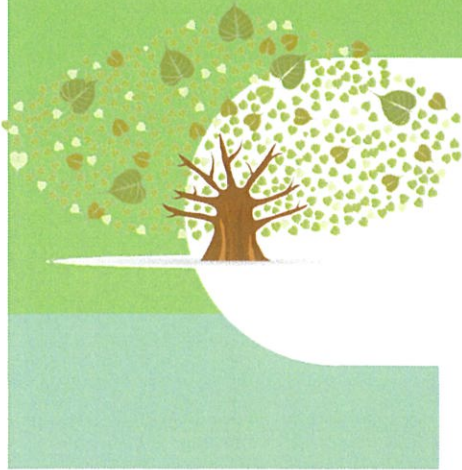


Term 4, Week 4



FLYING FIGTREE

superstars

Term 4	
10 th & 11 th Nov	Stage 2 Camp
11 th Nov	Remembrance day
14 th Nov	Yr 7 Selective High School Applications close
16 th & 22 nd Nov	Life Education Van
18 th Nov	Blue Dragon Presentation
24 th Nov	Band attending Instrument Festival (UOW)
25 th Nov	P & C Raffle Ticket's Due Back
30 th Nov	P&C Meeting in the HIVE @ 6:30pm
6 th Dec	Year 6 High School Day (Figtree High School)
9 th Dec	Twilight Night
13 th Dec	Year 6 Jamboree Action Park
14 th Dec	Presentation Day
15 th Dec	Year 6 Formal

IMPORTANT NEWS

Kindergarten enrolments now being taken for 2017.

Congratulations to the following **Bronze** Superstar student:

Mason Daley.

Congratulations to the following **Silver** Superstar students:

Toby Radford, Jai Cole, Rachel Zhao, Eva Davey, Mason Daley, Kaide Pratt, Rohan Hicks, Riley Andrews, Keira Meagher, Chelsea Jones, Alysha Telenta & Stefen Anagnostopoulos.

Congratulations to the following **Gold** Superstar students:

Ava Geralexis, Nash Ferguson, Jordan De Martin, Tyla O'Brien, Alexandra Wira, Anastasia Tsangaris, Max Atsas, Hadley Morris, Carter Cook, Lily Zhu, Isabel Burnes, Zali O'Brien, Kaylee Monkman, Stefen Anagnostopoulos.

Congratulations to the following **Emerald** Superstar students:

Caelan Cook, Zoe Lovegrove, Kasey Reh, Karly Fox, Abigail Jones, Grace Goodsell, William Humphrey, Nathan Mitrevski & Ethan Dzeparoski.

We will see you on Wednesday at the morning assembly!

HAPPY BIRTHDAY TO YOU...

Emily Rutledge, Toby Leo, Estella McKenzie, Ava Rasmussen, Jye Kiley, Ethan Carruthers & Kavindu Herath.

From the desk of the Principal

P&C Meeting

On Wednesday night the first P&C meeting for the term was held. There was a number of robust discussions to ensure we are always putting the Figtree Heights childrens' needs first. One of the fantastic outcomes from this meeting was the final go-ahead for the school cap. Over the last two years, teachers, students and parents have been involved in many discussions regarding the introduction of a new school cap. This cap will **not** replace either of the current hats (legionnaire or wide brim), it is simply another option, more conducive to sport and physical activity. These hats will hopefully be on sale in the new year. Please watch this space for more information on cost and how to go about purchasing this new hat.

In other P&C news, there will be an extra-ordinary meeting held on Wednesday November 30 at 6:30pm to vote on plans for the proposed COLA. After years of planning and submitting applications to the Department of Education, this year we were finally successful for a dollar for dollar project. The Department of Education will fund \$55,000 to our school to help with building a new COLA which joins the current school hall. These plans were suggested by the DoE as we are not eligible for a new school hall and this space would be an extension to our current hall as well as providing another undercover area for our students to play in wet weather; not to mention the fact it will accommodate our entire student population and loved ones. To action this grant we need, as a community, to assess the proposed plans and discuss a course of action. The extra-ordinary meeting will solely be focused on this project. If you are interested in helping with the decision, please ensure you attend.

Allergy Aware

At Figtree Heights Public School we are allergy aware. We have a number of students who are allergic to many different products and insects and it is essential that all students are aware of the harm that many food products can cause some of our students. We are not telling families what you can and can not pack in lunchboxes, however, it is critically important for students to understand that **nut products, even traces of nuts** can have serious and life threatening consequences for a handful of our students. Please read the information in this newsletter for more information on this important topic. We appreciate you taking the time to become allergy aware.

School Self-Evaluation Survey—STILL OPEN!!!!

As you know we currently have the School Self-Evaluation survey window open. Thank you to all of the families who have already completed this survey. If you have not yet had the opportunity, the URL is:

<https://www.surveymonkey.com/r/KGVSSCK>

Make sure you return the tear-off slip that went home a few weeks ago so that you can go in the draw to win a \$150 FGK voucher. The surveys are **due in by Monday 7th November (Week 5)**.

Have a wonderful weekend,
Warm regards,
Skye Hayward

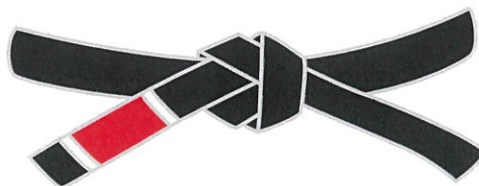
Congratulations

Tyla and Zali O'Brien competed at the Pan Pacific Jiu Jitsu Championships in Melbourne last weekend.

Tyla competed in the National 43kg weight division 12yr old.

Zali competed in the National 41.5kg weight division 11yr old.

Both Won Silver medals!



Allergy AWARE

WHAT IS FOOD ALLERGY?

A food allergy is an immune system response to a food protein that the body mistakenly believes is harmful. When the individual eats food containing that protein, the immune system releases massive amounts of chemicals, triggering symptoms that can affect a person's breathing, gastrointestinal tract, skin and/or heart.

Signs and symptoms of food allergy can be mild, moderate or severe. An allergic reaction can include; hives, swelling of the lips, face and eyes, abdominal pain, vomiting, swelling of the tongue, swelling of the throat, breathing difficulty, persistent dizziness and/collapse. If left untreated, signs and symptoms related to breathing and heart/blood pressure can be fatal.

WHAT IS ANAPHYLAXIS?

Food allergies can be severe, causing potentially life-threatening reactions known as anaphylaxis. Anaphylaxis must be treated as a medical emergency, requiring immediate treatment and urgent medical attention.

Anaphylaxis is a generalised allergic reaction, which often involves more than one body system (e.g. skin, respiratory, gastro-intestinal and cardiovascular). A severe allergic reaction or anaphylaxis always involves the respiratory and/or the cardiovascular system. An allergic reaction usually occurs within 20 minutes to two hours of eating even a small amount of the food, and can rapidly become life threatening.

2. HOW CAN WE HELP KEEP EACH OTHER SAFE?

Keeping each other safe is all about **AWARENESS, AVOIDANCE AND ACTION.**

AWARENESS

Know what your classmates are allergic to

AVOIDANCE

Never share food and wash your hands after you eat

ACTION

Tell a teacher straight away if someone with allergies looks sick...
even if they don't want you to!



Community News



Canteen Volunteer's required.

Canteen Roster

The Canteen is open for
Lunch orders **Monday, Wednesday and Friday.**
Snacks only at lunchtime on **Tuesday and Thursday.**
Don't forget to use our Canteen!

Monday	Dean Harvey & Brooke Kiley
Tuesday	Karen Craft & Russell Meredith
Wednesday	Julie Jones & Karen Parry
Thursday	Gerty Pelekanos
Friday	CLOSED

What is Due and When?

What	When
Stage 2 Camp Payment	OVERDUE
School Self Evaluation Survey	7th Nov

Please note: S/S= selected students only

Introducing **SCHOLASTIC** Book Clubs **LOOP** for Parents

LOOP is the Scholastic Book Clubs
Linked Online Ordering & Payment platform for parents.
To order and pay for Scholastic Book Clubs by credit card visit:
www.scholastic.com.au/LOOP







SUN 18 DEC
NORTH BEACH WOLLONGONG
splash and dash
FESTIVAL
SPLASHDASH.COM.AU



CODE THE GONG

The CoderDojo movement believes that an understanding of programming languages is increasingly important in the modern world, that it's both better and easier to learn these skills early and that nobody should be denied the opportunity to do so

Sessions + Registrations

Code the Gong runs during the school term on Tuesday
4:30pm - 6:00pm
@ Wollongong Youth Center
Ages 12 - 22

For more info at <http://codethegong.com/>

Primary Ethics

We are looking for a new Ethics Teacher to take on the Years 5 & 6 Ethics class. Ethics classes run on a Wednesday morning during SRE time as an alternative to Scripture. If you are or know of a family friend or relative, who is interested in becoming involved in volunteering as an Ethics teacher at our school, please contact me either through the front office or on my Primary Ethics email.

figtreeheightspsethics@outlook.com

Amanda Bowen
Primary Ethics Coordinator

Figtree Heights
Public School

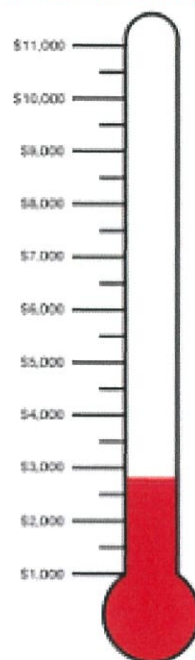
VOLUNTARY CONTRIBUTION

Support your
school from as
little as
\$60 per family!

OUR GOAL FOR
2016
\$6,600.00

to purchase ipads
and technology resources
for the HIVE for use
by all students.

CURRENT TALLY \$2,891.50



How to contribute...

The voluntary
contribution
amount for 2016 is
\$60 per family.
If you wish, you
are most welcome
to contribute more.

- ☑ Cash - place in envelope, label with family name & amount and send to office.
- ☑ Cheque - place in envelope, label with family name & amount and send to office. Cheques made out to FIGTREE HEIGHTS PUBLIC SCHOOL SCHOOL
- ☑ POP - make a secured payment via the Parent Online Payment at www.figtreehts-p.schools.nsw.edu.au

FOR MORE INFORMATION PICKUP A VOLUNTARY
CONTRIBUTION BROCHURE FROM SCHOOL OFFICE
OR CALL 4228 6770.



SUN 18 DEC

NORTH BEACH WOLLONGONG
SPLASHDASH.COM.AU



ENTER TO WIN
**Skipdive
the Beach**
AND BEYOND
TANDEM
EXPERIENCE

NOVOTEL
WOLLONGONG

SAND RUNS

2.5K



5K



McKeon's **SwimSchool**

OCEAN AND BASIN SWIMS

400M



800M



2K



AQUA THONS

150M/1.8k



300M/3k



750M/6k



KENNARDS
MORE

Devika

98

North

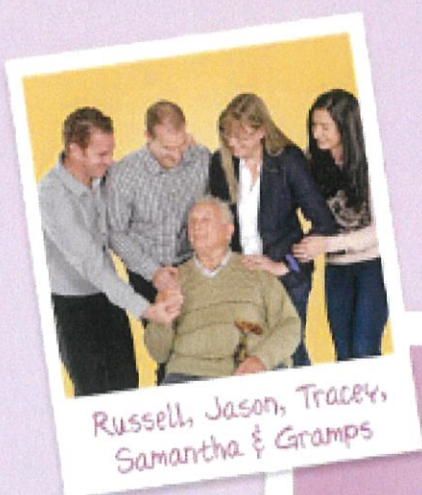
McKeon's

SwimSchool

Prostate Health

HANDS

eyeline



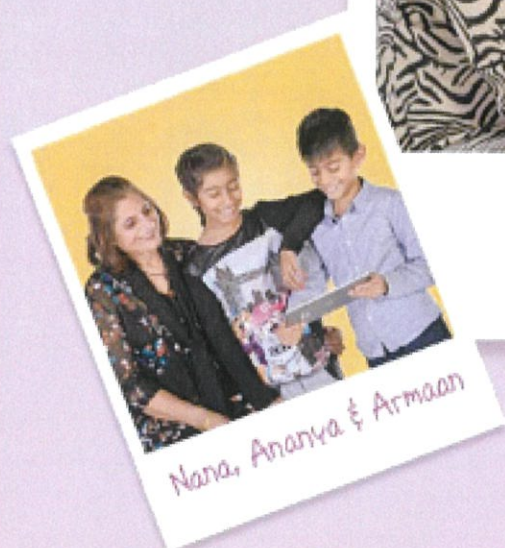
Russell, Jason, Tracey,
Samantha & Gramps



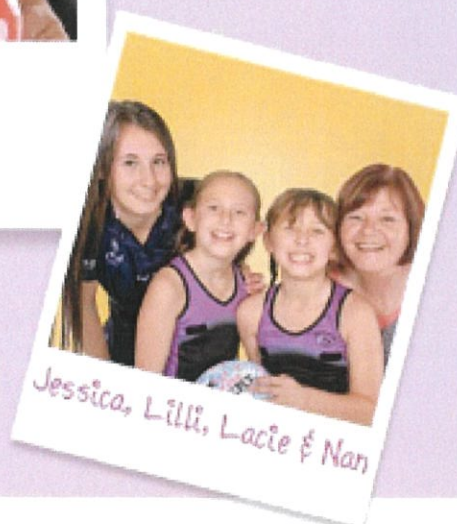
Dad & Nathaniel



Nan & Aaliyah



Nana, Ananya & Armaan



Jessica, Lilli, Lacie & Nan



GRANTS PARTNER

SATURDAY 12 NOVEMBER 2016 at 11 am

Warrawong Library, 67-71 King Street

Children between 5 and 12 years are invited to:

- listen to stories in English and Italian
- hear about games and toys played in the past
- make a small toy

RSVPs are essential by 9 November

iatl@speedlink.com.au or 4225 1144

iAti
ILLAWARRA ASSOCIATION of
TEACHERS of ITALIAN INC.

www.grandparentsday.nsw.gov.au

We need a new playground!! An update from the P&C Fundraising Sub Committee:

Upgrading our school playground has long been on the agenda for consecutive P&C committees over the years. In the past, schools have had assistance for playground maintenance and/or refurbishment from local council or the NSW Dep of Education. However, these bodies relinquished responsibility for school playgrounds in 1999, and now, all responsibility for playgrounds rest with the school community.

In 2015, the P&C worked with a local company, Creative Recreation Solutions (CRS) to develop some concept designs for brand new, safe, modern play equipment. Our wonderful new playground has a price tag of \$60,000.

In order to try and finance this, we have submitted three grant applications over the last 12-18 months to various funding programs including Community Building Partnerships Grants (NSW Govt), IMB Community Grants and Clubs Grants (through Wollongong City Council). All have been unsuccessful. Whilst we have several other plans up our sleeve, after discussions with other potential community funders and members of the P&C, our own fundraising target of \$60,000 has been agreed upon with which to refurbish our school playground.

The playground is heavily used by all of our students, all of our OOSH families; it is old and in desperate need of an upgrade. Learning through play is one of the fundamental elements in a child's development. Being able to provide an area where this need is met in such an interactive way will ensure our children continue to grow in their self-confidence, social skills and provide them with the essential decision making opportunities they require in today's society.

So how are we going to raise \$60,000?

We are planning to launch a 'Go Fund Me' fundraising campaign in 2017 to help reach our target (stay tuned). We intend to apply to Wests Illawarra for funding support. But to kick it all off, we are holding a raffle for a Queensland holiday! One book of 20 tickets per family will be sent home with the eldest child towards the end of Term 3. The raffle will be drawn at the Twilight Festival at the end of Term 4.

We hope everyone will be enthusiastic about this wonderful holiday prize, and get behind all the future initiatives to help us reach our target! By the way, although the prize is for '2 adults, 2 children', we checked, and the room CAN accommodate a third child (the winner will need to negotiate this at a small extra cost if necessary).

Let's provide this exciting new playground for OUR kids! Please do not hesitate to Kelly Andrews on 0400 576 527 if you have any further ideas or suggestions, or email the P&C on fhpspc@gmail.com



Figtree Heights
Public School

FHPS

Parents &
Citizens
Association

\$2.00 PER TICKET

MAJOR RAFFLE

\$2.00
Per
Ticket

Name: _____
Address: _____
P/C: _____
Phone: _____

1st Prize: The major draw prize includes:

- Four (4) night holiday at Sea World Resort & Water Park on the Gold Coast for two (2) adults and two (2) children in a Resort Double Room. Can be used over the School holidays*
- Unlimited entry for two (2) adults and two (2) children to Sea World, Warner Bros. Movie World and Wet'n'Wild Gold Coast
- \$100 credit for food and beverage at Sea World Resort & Water Park
- \$200 Caltex Cash Card

Valued at \$2,100



All money and tickets (including unused tickets) are to be returned to the School Office by 25 November 2016.

Prize to be drawn at 6:00pm on 5 December 2016 at the Figtree Heights Public School Twilight Festival, 51 Georges Avenue, Figtree, NSW.

IT IS SCHOOL POLICY THAT CHILDREN DO NOT SELL DOOR TO DOOR WITHOUT SUPERVISION OF AN ADULT

Ticket valid from 10:00am to 10:00pm on 5 December 2016 at the Figtree Heights Public School Twilight Festival, 51 Georges Avenue, Figtree, NSW. Tickets are valid for use for up to 12 months from the date of purchase. The amount of the prize is subject to change without notice. The prize does not include airfare, meals, transport, attraction or recreation. An accommodation is subject to availability. The ticket is valid for use from 10:00am to 10:00pm on 5 December 2016 at the Figtree Heights Public School Twilight Festival, 51 Georges Avenue, Figtree, NSW. Tickets are valid for use for up to 12 months from the date of purchase. The amount of the prize is subject to change without notice. The prize does not include airfare, meals, transport, attraction or recreation. An accommodation is subject to availability.



P & C

AST Surf School

AST Surf School is providing primary schools in the local area the opportunity for students to participate in before school surf education programs.

This specialized program is catered to students from the age of 5-12yrs of age focusing on ocean awareness beach safety and building ocean confidence in a healthy and safe environment. The lessons are catered for all level surfers and designed in getting their surf skills to the next level.

We are offering this special spring program at a 50% discounted price.

It will consist of:

- 5 lessons of 1.5 hours,
- Wet suit and board hire included
- 1-6 instructor to student ratio

All of our instructors are qualified with current level 1 surfing Australia certificates, first aid certificates, working with children checks and ocean certificates. All of AST Surf Schools staff are friendly and passionate in what they do.

This 7.5 hour program will commence on the 2nd and 4th of November and will come to a total cost of \$100 per student with all included. The program will be operated at Bulli beach with the starting time at 7am and finishing at 8:30am.

This a great opportunity for kids to be outdoors and enjoy the beautiful area in which in we live in.

To sign up this special spring program please go to

<http://australiansurftours.rezgo.com/details/92241/surfgroms-performer> and select the 5 Week Course option on the right hand side of screen and select your preferred start date either the 2nd or the 4th of November.

Once you proceed to check out you can use the Promo Code "CWPSSA" to get the 50% discount.

For any more information or further questions please don't hesitate to contact us on the number below.



BE BUS AWARE

Buses can't
stop quickly



bebusaware.com.au



Transport
for NSW



BE SAFE ON AND AROUND BUSES.
BE BUS AWARE!

1

Follow the rules and cross with care

2

Give way to buses

3

Reduce speed to 40 when lights are flashing

4

Plan ahead and don't rush for the bus

5

Bike riders take care around buses

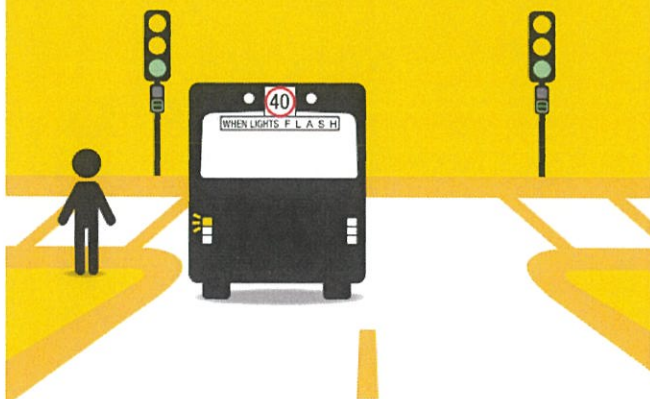
bebusaware.com.au



Transport
for NSW

BE BUS AWARE

Follow the rules
and cross with care



bebusaware.com.au



Transport
for NSW

BE BUS AWARE

Reduce speed to 40
when lights are flashing



bebusaware.com.au



Transport
for NSW